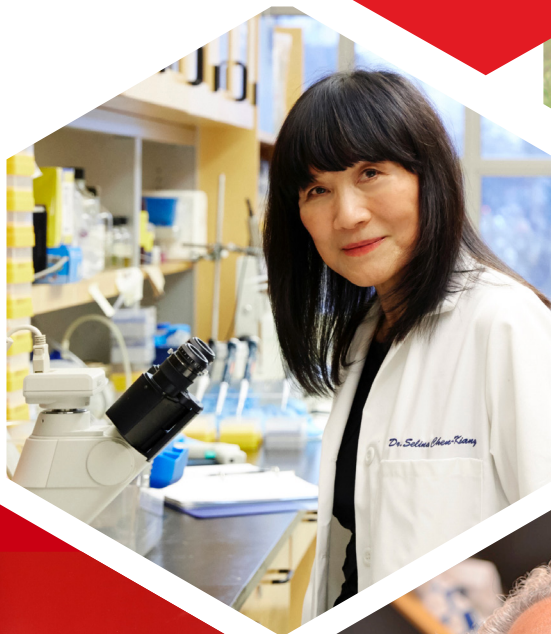


FINDING CURES STARTS HERE

2020
ANNUAL REPORT



LYMPHOMA
RESEARCH • FOUNDATION

WHY THE LYMPHOMA RESEARCH FOUNDATION?

Each year, more than 100,000 people in the U.S. are diagnosed with a form of lymphoma and chronic lymphocytic leukemia. That means every five minutes, someone is diagnosed with lymphoma.

The Lymphoma Research Foundation (LRF) has more than two-and-a-half decades of experience finding cures for lymphoma. **LRF is committed to funding the very best science and serving the lymphoma community through education, support, and compassion.**



More than
2 MILLION PEOPLE
served through education
programs, digital resources,
and support services



Provided more than
**70 PATIENT AND
PROFESSIONAL
PROGRAMS**



More than
**10,000 PATIENTS,
SURVIVORS, AND
CAREGIVERS**
served through the LRF Helpline



15 NEW GRANTS
awarded and more than
40,000 research hours
funded — enabling early-
career scientists to maintain
a research focus on lymphoma

People in all
50 STATES
(including the District of
Columbia) and more than
50 COUNTRIES
accessed LRF digital resources



LETTER FROM THE **CEO & CHAIR** **OF THE BOARD**

2020 was filled with unprecedented obstacles and change, but through it all one thing remained constant – the Lymphoma Research Foundation’s (LRF’s) unwavering commitment to the lymphoma community. Since the onset of the COVID-19 crisis, we have been working tirelessly to adjust our programming and resources to best serve the patients and families who look to us for resources and support.

During the pandemic, funds for early-career scientists decreased, but we were proud to continue our commitment to these scientists and the lymphoma community by funding a full class of grantees.

In 2020, we celebrated 25 years of innovation and progress. We also celebrated supporters like you who help us continue to impact the broad continuum of lymphoma research and empower patients through education and support services.

Additionally, we launched an exciting new global research initiative in follicular lymphoma. Building upon the success of other LRF scientific initiatives and more than two decades’ experience convening world-leading experts for scientific workshops and consortia, the Jaime Peykoff Follicular Lymphoma Initiative is poised to change the research and treatment landscape for this disease.

As we continue to celebrate our 25th anniversary, reflect on our past, and celebrate our current achievements, we keep our eyes on the future — a world without lymphoma. We thank all of the patients, survivors, families, volunteers, and supporters like you, who have made all of our achievements possible.

Sincerely,



Meghan Gutierrez
Chief Executive Officer



Steven Eichberg
Chair, Board of Directors



Steven Eichberg
Chair, Board of Directors



Meghan Gutierrez
Chief Executive Officer

FINDING CURES STARTS WITH LRF

25 YEARS OF INNOVATION AND PROGRESS

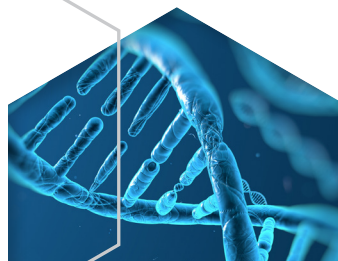
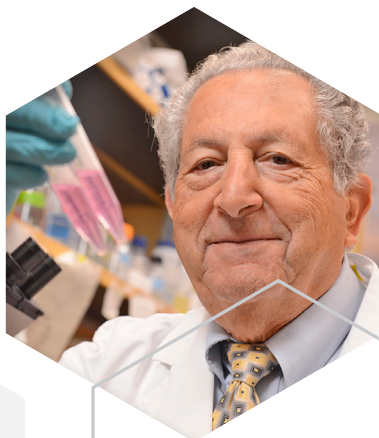
1995 — Under the leadership of Joseph Bertino, MD, the **LRF Scientific Advisory Board (SAB)** was created to guide the LRF's research portfolio. Today, the world-renowned SAB comprises leading lymphoma experts, nine of whom are former LRF grantees.

2001 — Research led by various SAB members discovered that **diffuse large B-cell lymphoma (DLBCL)** is two distinct diseases, each with its own genetic profile.

2008 — To expand its first-in-class lymphoma education programming, LRF developed **Lymphoma Rounds**, a professional education program specifically for those caring for lymphoma patients. The program debuted in Chicago, Ill.; today, Lymphoma Rounds is held in seven major U.S. cities.

1996 — The inaugural North American Educational Forum on Lymphoma was convened in California. Today, the Ed Forum is the **largest lymphoma-specific conference** for patients in the world and has inspired a series of regional and local LRF patient programs hosted year-round across the nation.

2003 — LRF's Mantle Cell Lymphoma (MCL) Initiative was founded, making LRF the **largest private funder of MCL research**. The Initiative transformed the treatment and care of people with MCL.



1995 was a significant year for the Lymphoma Research Foundation (LRF) — it was then that **LRF realized its dual mission: to eradicate lymphoma** — by funding innovative research guided by its world-renowned Scientific Advisory Board — and **to serve those touched by this disease** — by sharing research and treatment insights with the lymphoma community through national education programs.

Finding cures starts here. Through lymphoma-specific research grants and consortia, LRF seeks to understand the nearly 100 subtypes of lymphoma and support the development of new treatments. As a result, LRF-supported researchers have been involved in many of the most significant lymphoma breakthroughs witnessed in the past quarter-century.

2017 — The first cellular therapy to treat lymphoma, **chimeric antigen receptor (CAR) T cell therapy**, was approved by the FDA for the treatment of DLBCL. In 2003, LRF had funded the first-ever study providing in vivo evidence that CAR T cells are effective in an animal model.

2020 — LRF created the Jaime Peykoff **Follicular Lymphoma (FL) Initiative**, a \$10 million endeavor to accelerate research and patient care for FL (read more about this Initiative on page 10).

2014 — As a direct result of the efforts and research of a dozen LRF grantees and SAB members, the treatment of **chronic lymphocytic leukemia (CLL) was transformed** in a single year. The FDA approved four new therapies for the disease, making treatment possible for more patients than ever before and improving outcomes.

2019 — Led by LRF, SAB, and MCL Consortium members, the **first-ever combination and chemotherapy-free treatment regimen** for patients with slow-growing forms of non-Hodgkin lymphoma was approved by the FDA.



IMPACT MOMENT

“Our goal has always been to empower patients to become their own health advocate, and to ultimately one day see a world without lymphoma. **Over the past 25 years, LRF has gained a better understanding not only of lymphoma, but also of the effect it can have on those who receive a diagnosis.**”

— **Jerry and Barbara Freundlich**
Founders and Directors Emeritus



IMPACT ON

RESEARCH AND ADVANCING CURES



Since its inception, LRF has made major contributions to the lymphoma research enterprise, awarding nearly \$65 million in lymphoma-specific research grants. LRF's disease specificity and hyperfocus on finding cures for every type of lymphoma ensure the next generation of cancer researchers dedicate their careers to studying lymphoma and that world-leading lymphoma experts collaborate and accelerate the pace of scientific discovery.

MEET OUR 2020 RESEARCHERS



Pamela Allen
Emory University/Winship
Cancer Institute
.....
LRF SCHOLAR

Research Study: Mogamulizumab and ECP for the Treatment of Sezary Syndrome and Mycosis Fungoides
Lymphoma Focus: T-cell lymphoma, mycosis fungoides, primary cutaneous T-cell lymphoma, Sezary syndrome



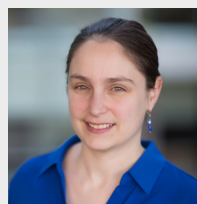
Xu Cao, PhD
Beckman Research Institute
of City of Hope
.....
**POSTDOCTORAL FELLOWSHIP
GRANT**

Research Study: Rational Combination of Paclitaxel with CD47 Blockades to Eradicate Non-Hodgkin Lymphoma
Lymphoma Focus: Non-Hodgkin lymphoma



Jamie Flerlage, MD
St. Jude Children's
Research Hospital, Inc.
.....
**STEPHANIE A. GREGORY MD,
FACP DISTINGUISHED LRF
SCHOLAR**

Research Study: Global Trial for Nodular Lymphocyte-Predominant Hodgkin Lymphoma
Lymphoma Focus: Adolescent and young adult (AYA) lymphoma, pediatric lymphoma, Hodgkin lymphoma, nodular lymphocyte-predominant Hodgkin lymphoma



Natalie Grover, MD
The University of North Carolina
at Chapel Hill
.....
**CAREER DEVELOPMENT
AWARD**

Research Study: CD30-directed CAR T Cells Co-Expressing CCR4 in Relapsed/Refractory Hodgkin Lymphoma
Lymphoma Focus: Hodgkin lymphoma, classical Hodgkin lymphoma



Boyu Hu, MD
University of Utah/Huntsman
Cancer Institute
.....
LRF SCHOLAR

Research Study: Targeting DNA Damage Repair Mechanisms in Chronic Lymphocytic Leukemia
Lymphoma Focus: Non-Hodgkin lymphoma, B-cell lymphoma, chronic lymphocytic leukemia/small lymphocytic lymphoma



Christina Lee, MD
Memorial Sloan Kettering
Cancer Center
.....
LRF SCHOLAR

Research Study: Dual CDK4/6 and Immune Checkpoint Inhibitor Therapy in Indolent Non-Hodgkin Lymphoma
Lymphoma Focus: B-cell lymphoma, indolent lymphoma, non-Hodgkin lymphoma, mantle cell lymphoma, marginal zone lymphoma, follicular lymphoma



Yong Gu Lee, PhD
The Trustees of the University
of Pennsylvania
.....
**POSTDOCTORAL FELLOWSHIP
GRANT**

Research Study: A Novel Chimeric Antigen Receptor T Cell for the Treatment of B-cell Lymphomas
Lymphoma Focus: B-cell lymphoma, non-Hodgkin lymphoma, diffuse large B-cell lymphoma



Adam Lin, MD, PhD
 Northwestern University Feinberg
 School of Medicine

**POSTDOCTORAL FELLOWSHIP
 GRANT**

Research Study: Engineering CpG Deoxynucleotide-Conjugated Gold Nanoparticles for Enhanced Anti-Lymphoma Effects

Lymphoma Focus: B-cell lymphoma, non-Hodgkin lymphoma



Ryan Lynch, MD
 University of Washington

CAREER DEVELOPMENT AWARD

Research Study: Optimizing Checkpoint-Inhibitor Combinations in the Management of Classic Hodgkin Lymphoma

Lymphoma Focus: Hodgkin lymphoma, classical Hodgkin lymphoma



Alexia Martinez de Paz, PhD
 Joan & Sanford I. Weill Medical
 College of Cornell University

**POSTDOCTORAL FELLOWSHIP
 GRANT**

Research Study: Signaling to Chromatin Pathways in Regulation of Germinal Center B-cell Differentiation and Lymphoma

Lymphoma Focus: Diffuse large B-cell lymphoma, follicular lymphoma, Burkitt lymphoma



Laurianne Sourzic, PhD
 Joan & Sanford I. Weill Medical
 College of Cornell University

**POSTDOCTORAL FELLOWSHIP
 GRANT**

Research Study: Core Stem-Like Properties and Subpopulations of Germinal Center B-cells Promoting Lymphomagenesis

Lymphoma Focus: Diffuse large B-cell lymphoma, follicular lymphoma

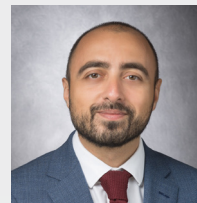


Raphael Eric Steiner, MD
 University of Texas MD Anderson
 Cancer Center

LRF SCHOLAR

Research Study: Phase II Study BV and Nivolumab Alone and Combined with R-EPOCH for Patients with Untreated PMBL

Lymphoma Focus: Aggressive lymphoma, non-Hodgkin lymphoma, diffuse large B-cell lymphoma, primary mediastinal large B-cell lymphoma



Paolo Strati, MD
 University of Texas MD Anderson
 Cancer Center

CAREER DEVELOPMENT AWARD

Research Study: Targeting Macrophages to Mitigate CAR T Toxicity in B-cell Non-Hodgkin Lymphoma

Lymphoma Focus: B-cell lymphoma, aggressive lymphoma, diffuse large B-cell lymphoma, primary mediastinal large B-cell lymphoma



Christopher Strouse, MD
 The University of Iowa

LRF SCHOLAR

Research Study: Comparative Effectiveness Research Strategies Assessing Bendamustine Dosing in Follicular Lymphoma

Lymphoma Focus: Indolent lymphoma, B-cell lymphoma, non-Hodgkin lymphoma, follicular lymphoma



Abi Vijenthira, MD
 University Health Network

LRF SCHOLAR

Research Study: The Impact of Frailty on Survival in Diffuse Large B-cell Lymphoma

Lymphoma Focus: Aggressive lymphoma, B-cell lymphoma, diffuse large B-cell lymphoma



\$10 MILLION COMMITMENT

TO ACCELERATE FOLLICULAR LYMPHOMA RESEARCH AND PATIENT CARE

The Lymphoma Research Foundation (LRF) will convene the world's experts in follicular lymphoma (FL) research and patient care and drive investment in clinical research, thanks to a \$10 million gift from the Peykoff family and Niagara Cares. The generous gift establishes the Jaime Peykoff Follicular Lymphoma Initiative in honor of Jaime Peykoff, an FL survivor and the wife of Niagara Bottling owner Andy Peykoff II.

"We are so very impressed by the Lymphoma Research Foundation's extensive background in partnering with world-leading experts to advance the field of lymphoma research as well as the caliber of its Scientific Advisory Board," says Jaime Peykoff. "We also loved their commitment to investing in early-career scientists to help push forward the pace and openness of lymphoma research. We are very excited to see what will be uncovered and accomplished with this new disease-focused initiative. It's going to be a great journey!"

"We also loved their commitment to investing in early-career scientists to help push forward the pace and openness of lymphoma research."

Follicular lymphoma is an indolent (slow-growing) form of non-Hodgkin lymphoma (NHL) and remains an incurable and continuing challenge for researchers and clinicians. While most patients respond to the current standard of care, many will require treatment throughout their lifetime; the inability for some patients to achieve a complete remission and the early progression of disease in others can both result in poorer long-term outcomes.

Through the Jaime Peykoff Follicular Lymphoma Initiative, LRF will mobilize the research community to better understand FL, accelerate therapeutic development, and bring innovations and advances to patients who require them faster and more efficiently.

"The Lymphoma Research Foundation seeks to eradicate this disease by supporting innovative research and the development of new and improved treatments for lymphoma. Direct investment in cutting-edge science is the primary way we advance our mission," says Meghan Gutierrez, LRF Chief Executive Officer. "This generous gift will allow us to develop and provide the critical tools and resources necessary to meaningfully advance the study of follicular lymphoma and impact patient care."

LEADERSHIP

LRF assembled a Steering Committee of FL experts to provide thought leadership for the Initiative. This multidisciplinary, multi-institutional panel will ensure all key stakeholders are informed of the Initiative's goals and identify the most significant unmet needs in clinical FL research. The Steering Committee will also work with LRF to develop collaborative partnerships with other research institutions and organizations to maximize the Initiative's investment.

The Steering Committee will also work with LRF to develop collaborative partnerships with other research institutions and organizations to maximize the Initiative's investment.

FL STEERING COMMITTEE MEMBERS:

Andrew D. Zelentz, MD, PhD

Memorial Sloan Kettering Cancer Center, Chair

Sonali M. Smith, MD

The University of Chicago Medical Center, Vice Chair

Stephen Ansell, MD, PhD

Mayo Clinic, Rochester

John P. Leonard, MD

Weill Cornell Medicine

Brian K. Link, MD

University of Iowa, Holden Comprehensive Cancer Center

Laura Pasqualucci, MD

Columbia University Medical Center

John M. Timmerman, MD

UCLA Jonsson Comprehensive Cancer Center

INTERNATIONAL FOLLICULAR LYMPHOMA SCIENTIFIC WORKSHOP

Building upon more than two decades' experience as a convener of international scientific consortia and disease-specific research workshops, LRF will develop and convene an international Scientific Workshop intended to drive collaboration, which can often lead to scientific breakthroughs and prevent duplicative use of resources. Follicular lymphoma thought leaders will share early research findings, discuss the results of pivotal clinical trials, and engage in planning exercises designed to advance FL research.

CLINICAL RESEARCH GRANTS

LRF is committed to funding the most promising lymphoma researchers who have the greatest potential to improve patient care and ultimately, to improve patient outcomes. Under the expert leadership of the Jaime Peykoff Follicular Lymphoma Initiative Steering Committee and the LRF Scientific Advisory Board (SAB), LRF will fund FL research through two programs: the LRF Clinical Investigator Career Development Award for early-career researchers and a Disease Focus Area award focused on FL for senior faculty researchers.

"Amidst the continuing COVID-19 pandemic, many scientific research labs across the country were forced to shut down, and funds for senior and early-career scientists continue to decrease," says Gutierrez. "We are proud to continue our commitment to the lymphoma community by offering these additional grants within our research portfolio. We thank our supporters, like the Peykoff family, for making this important work possible."

This full article is published in the Fall 2020 edition of Pulse, a publication of the Lymphoma Research Foundation.



IMPACT MOMENT

“LRF’s early funding enabled us to begin to translate innovative concepts into **groundbreaking therapies** that improve the outcomes of mantle cell lymphoma patients.”

— Selina Chen-Kiang, PhD
Weill Cornell Medical College. Three-time LRF Grantee

LRF'S COVID-19 RESPONSE

SUPPORTING THE LYMPHOMA COMMUNITY



The COVID-19 pandemic swept the world and disrupted the way we interact, communicate, conduct business, and live. As the pandemic began to unfold, LRF quickly responded by coming up with new and creative ways to meet the needs of the lymphoma community.

PIVOTING TO VIRTUAL EDUCATION

As an immediate response to COVID-19, LRF hosted a webinar in March 2020 featuring LRF Scientific Advisory Board (SAB) member John P. Leonard, MD (Weill Cornell Medicine), who shared what lymphoma patients need to know about the virus. Due to the high demand for resources and education around the virus, LRF expanded its COVID-19 webinar offerings to include topics on managing concerns for lymphoma patients in treatment and understanding telemedicine. LRF also hosted its first virtual Ask the Doctor About Lymphoma and Lymphoma Workshop educational programs in the Spring, bringing these hallmark educational events into the safety of people's homes.

"Hearing the latest information on COVID-19, lymphoma treatment options, and research helps patients cope during these challenging times," says Sarah Quinlan, Senior Director of Programs and Strategy at the Lymphoma Research Foundation. "Each day can present new obstacles, especially for those living with lymphoma, and we want to support patients by giving them access to medical experts."

SUPPORTING THE MOST VULNERABLE

To further support the lymphoma community during the pandemic, LRF sought to address the added financial burden related to the virus. Aside from the already overwhelming costs that are often associated with cancer, many people contacting the LRF Helpline this year reported that COVID-19 made the issue worse.

LRF's Patient Aid Program is a cornerstone resource for people undergoing treatment for lymphoma. The program provides limited financial assistance to lymphoma patients to help cover the cost of out-of-pocket expenses associated with their care. In direct response to the increased need, LRF expanded its Patient Aid Program to create a COVID-19-specific financial assistance grant program, helping those impacted financially by the virus and lymphoma.

SOCIALLY DISTANCED FUNDRAISING

COVID-19 also had a significant impact on nonprofits' ability to fundraise. When it became clear that the virus would impact public gatherings, LRF's Distinguished Events and its Peer-to-Peer fundraising teams began to rethink LRF's signature fundraising events, including *Swirl: A Wine Tasting Event*, the annual LRF Gala, and the Team LRF Lymphoma Walk series and LRF Research Ride.

Swirl: A Wine Tasting Event offers attendees the opportunity to taste and enjoy a collection of wines, participate in a silent auction, and raise money to support LRF's mission. In an effort to bring this event into the comfort of people's homes, the traditional in-person event pivoted to a two-episode tasting series held in the spring and fall called *Swirl: America*. The events featured prominent beverage brands, cocktail mixologists, and an opportunity to learn about wines from the Santa Ynez Valley wine region in California.

LRF's largest formal event, the annual LRF Gala, was held virtually as well, marking its 25th anniversary. The "Finding Cures Starts with You" 25th Anniversary LRF Gala brought together leaders in the lymphoma community — including health care providers, researchers, corporate partners, patients, survivors, and volunteers — to celebrate and pay tribute to those making an impact in lymphoma research and patient care. For the first time, the Gala was live streamed for registered attendees and archived for public viewing on LRF's YouTube channel.

The Team LRF Lymphoma Walk series and Lymphoma Research Ride raise critical funds for lymphoma research programs and provide an opportunity for the lymphoma community to come together for a special day of celebration. In 2020, LRF hosted its first-ever Facebook Live fundraising rally, *Rally On! America*, to bring the lymphoma community together during a time of social distancing. In addition, the traditional Lymphoma Research Ride held in Maryland transitioned to a virtual bike ride fundraiser, offering all cycle enthusiasts around the country an opportunity to participate and join a national movement.

OUR IMPACT:

3,400

attendees of LRF COVID-19 patient programming

807

downloads of the LRF COVID-19 fact sheets

432

Patient Aid Grants awarded

1,010

views of the LRF COVID-19 Facebook Live fundraising rally

2,088

views of the LRF COVID-19 Webinar

41

virtual educational programs hosted

1,000

Team LRF volunteers and fundraisers

16,658

visits to the LRF COVID-19 Learning Center and Resources

2,000

registered participants in LRF's professional education program Lymphoma Rounds





IMPACT MOMENT

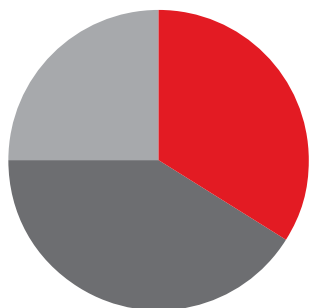
*"Rally On! America gave me and my family the opportunity to interact with my fellow survivors and other members of the lymphoma community, which has even more meaning during this global pandemic. **I'm glad to have an organization like LRF to support and comfort me — as well as lymphoma patients and their loved ones** — during these most difficult times."*

— Dexter Neal
Lymphoma Survivor

FINANCIALS

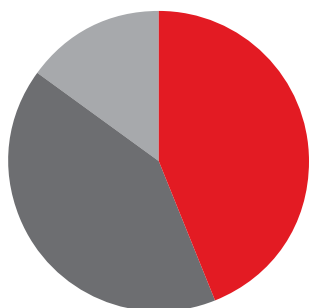
For the fiscal year ending in June 30, 2020

REVENUES



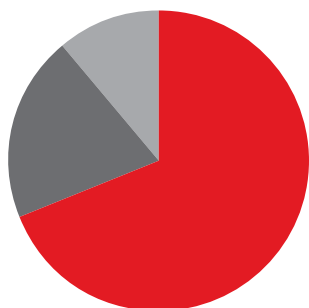
● Net assets released from restrictions	\$3.2 million [34%]
● Contributions and grants	\$3.8 million [41%]
● Special events and revenue	\$2.3 million [25%]

PROGRAM SERVICES EXPENSES



● Research	\$2.8 million [44%]
● Education programs and patient services	\$2.6 million [41%]
● Communications and advocacy	\$1 million [15%]

EXPENSES



● Program services	\$6.4 million [69%]
● Fundraising	\$1.8 million [20%]
● Administration	\$1 million [11%]

The Condensed Balance Sheets and Statements of Activities of the Lymphoma Research Foundation as of June 30, 2020 and 2020 have been derived from LRF's audited financial statements. The Lymphoma Research Foundation's complete set of audited financial statements and related information can be found on the Lymphoma Research Foundation's website, lymphoma.org/annualreport. The Financial Statements have been audited by KPMG LLP.

LYMPHOMA RESEARCH FOUNDATION

FINANCIAL REPORTS

(in thousands) as of June 30, 2020

ASSETS	2020	LIABILITIES & NET ASSETS	2020
Cash and cash equivalents	\$ 3,167	Research grants payable	\$ 2,614
Investments	18,055	Refundable advances	782
Contributions and grants receivable	1,074	Accounts payable and accrued expenses	392
Prepaid expenses and other assets	414	Accrued salaries and vacation	209
TOTAL ASSETS	\$ 22,710	TOTAL LIABILITIES	3,997
		Unrestricted net assets	4,685
		Temporarily restricted net assets	14,028
		TOTAL NET ASSETS	18,713
		TOTAL LIABILITIES & NET ASSETS	\$ 22,710

LYMPHOMA RESEARCH FOUNDATION

CONDENSED STATEMENT OF ACTIVITIES

(in thousands) as of June 30, 2020

UNRESTRICTED CONTRIBUTIONS & REVENUES	2020		
Special events revenues & contributions	\$ 5,524	Program services	\$ 6,371
Investments & other income	604	Supporting services	2,876
Contributions & revenues	6,128	TOTAL EXPENSES	9,247
Net assets released from restrictions	3,202	INCREASE IN UNRESTRICTED NET ASSETS	83
TOTAL CONTRIBUTIONS & REVENUES	\$ 9,330	INCREASE IN TEMPORARY RESTRICTED NET ASSETS	5,960
		INCREASE IN NET ASSETS	\$ 6,043

SCIENTIFIC ADVISORY BOARD

The Lymphoma Research Foundation's volunteer Scientific Advisory Board, comprised of world-renowned lymphoma experts, guides the Foundation's research activities, seeking out the most innovative and promising lymphoma research projects for support.

ANDREW D. ZELENETZ, MD, PHD
Chair
Memorial Sloan Kettering Cancer Center

SONALI M. SMITH, MD
Chair-Elect
The University of Chicago

RANJANA ADVANI, MD
Stanford University School of Medicine

ASH A. ALIZADEH, MD, PHD
Stanford University School of Medicine

STEPHEN ANSELL, MD, PHD
Mayo Clinic, Rochester

KRISTIE A. BLUM, MD
Winship Cancer Institute of
Emory University

CATHERINE BOLLARD, MD, MBChB
George Washington University
Children's National Medical Center

JENNIFER BROWN, MD
Dana-Farber Cancer Institute

JAMES CERHAN, MD, PHD
Mayo Clinic, Rochester

ETHEL CESARMAN, MD, PHD
NewYork-Presbyterian Hospital
Weill Cornell Medicine

**BRUCE D. CHESON, MD, FACP,
FAAAS, FASCO**
Past Chair, 2010-2012

MORTON COLEMAN, MD
Chair, Medical Affiliates Board
NewYork-Presbyterian Hospital
Weill Cornell Medicine

SANDEEP DAVE, MD, MS
Duke University

KIERON M. DUNLEAVY, MD
George Washington University
GW Cancer Center

KOJO S.J. ELENITOBA-JOHNSON, MD
University of Pennsylvania
Perelman School of Medicine

ANDREW M. EVENS, DO, MSc, FACP
Rutgers Cancer Institute of New Jersey

CHRISTOPHER R. FLOWERS, MD, MS
The University of Texas MD Anderson
Cancer Center

JONATHAN W. FRIEDBERG, MD, MMSc
University of Rochester
James P. Wilmot Cancer Institute

LEO I. GORDON, MD, FACP
Past Chair, 2015-2017
Robert H. Lurie Comprehensive Cancer Center
of Northwestern University

THOMAS M. HABERMANN, MD
Immediate Past Chair, 2017-2019
Mayo Clinic, Rochester

STEVEN M. HORWITZ, MD
Memorial Sloan Kettering Cancer Center

ERIC D. HSI, MD
Cleveland Clinic

BRAD S. KAHL, MD
Washington University School of Medicine

KARA KELLY, MD
Roswell Park Comprehensive Cancer Center
University at Buffalo Jacobs School of Medicine

ANN S. LACASCE, MD
Harvard Medical School
Dana-Farber Cancer Institute

JOHN P. LEONARD, MD
Past Chair, 2012-2015
NewYork-Presbyterian Hospital
Weill Cornell Medicine

BRIAN K. LINK, MD
University of Iowa

IZIDORE S. LOSSOS, MD
University of Miami Health System
Sylvester Comprehensive Cancer Center

PETER MARTIN, MD
Weill Cornell Medicine

ARI MELNICK, MD
NewYork-Presbyterian Hospital
Weill Cornell Medicine

LINDSAY MORTON, PHD
National Cancer Institute

LAURA PASQUALUCCI, MD
Columbia University
H. Irving Comprehensive Cancer Center

BARBARA PRO, MD
Robert H. Lurie Comprehensive Cancer
Center of Northwestern University

KANTI R. RAI, MD
Hofstra Northwell School of Medicine

LISA RIMSZA, MD
Mayo Clinic, Arizona

KERRY J. SAVAGE, MD
British Columbia Cancer

DAVID WILLIAM SCOTT, MBChB, PHD
British Columbia Cancer

LAURIE SEHN, MD, MPH
British Columbia Cancer

MARGARET SHIPP, MD
Harvard Medical School
Dana-Farber Cancer Institute

EDUARDO M. SOTOMAYOR, MD
George Washington University
GW Cancer Center

CHRISTIAN STEIDL, MD
British Columbia Cancer

JOHN M. TIMMERMAN, MD
UCLA Jonsson Comprehensive Cancer Center

SVEN DE VOS, MD, PHD
UCLA Jonsson Comprehensive Cancer Center

HANS-GUIDO WENDEL, MD
Memorial Sloan Kettering Cancer Center

MICHAEL E. WILLIAMS, MD, ScM
University of Virginia Cancer Center

FOUNDING CHAIR

JOSEPH R. BERTINO, MD
Rutgers Robert Wood Johnson Medical School
Rutgers Cancer Institute of New Jersey

Fiscal year ending June 30, 2020

BOARD OF DIRECTORS

MICHAEL WERNER**Chair**

Chicago, IL

KEVIN FENNESSEY**Vice Chair**

Naples, FL

STEVEN J. PRINCE**Treasurer and Past Chair**

Purchase, NY

LEIGH OLSON**Secretary**

Purchase, NY

MICHAEL AKINYELE

Upper Marlboro, MD

JEFF BLOCK

San Francisco, CA

ERIC COHEN**(In Memoriam)**

Chicago, IL

MORTON COLEMAN, MD**Chair, Medical Affiliates Board**

New York, NY

TOM CONDON

Santa Barbara, CA

STEVEN EICHBERG

Plymouth, MA

MICHAEL FROY

Chicago, IL

TOM GOLDSTONE

New York, NY

KEITH HOOGLAND

Glenview, IL

JOHN LEONARD, MD**Past Chair, Scientific Advisory Board**

New York, NY

BOB MCAULEY

Charlottesville, VA

KIM METCALF

Landenberg, PA

JOHN A. NELSON

Westport, CT

SHERI ROSENFELD

New York, NY

ROBERT WERNER

Aventura, FL

BRUCE YABLON

Chappaqua, NY

ANDREW D. ZELENETZ**Chair, Scientific Advisory Board**

New York, NY

MEMBERS EMERITUS**JOSEPH R. BERTINO, MD**

New Brunswick, NJ

ERROL M. COOK**Past Chair**

Boca Raton, FL

BARBARA FREUNDLICH**Founder**

New York, NY

JERRY FREUNDLICH**Founder and Past Chair**

New York, NY

DONNA REINBOLT

Houston, TX

Fiscal year ending June 30, 2020

LEADERSHIP CIRCLE

The Lymphoma Research Foundation recognizes the exceptional generosity of the members of the 2020 Leadership Circle. These individuals and foundations have provided hope to the lymphoma community through their commitment to supporting innovative research and reliable and compassionate services for everyone touched by this disease.

Anonymous (10)	Barbara and Jerry Freundlich	Prince Family Foundation
Mr. Michael Akinyele	Michael and Lynn Froy	Donna and Paul Reinbolt
Mr. and Mrs. Steven Aronow	Mr. and Mrs. Thomas E. Goldstone	Lois and Jerry Rosenblum
The David R. and Patricia D. Atkinson Foundation	Mr. and Mrs. Keith A. Hoogland	Sheri and James Rosenfeld
Dr. Joseph R. Bertino	Ms. Katherine Johnson	Rudi's Kids Foundation
Mr. Jeffrey Block and Ms. Michele Gerus	Mrs. Carolyn J. Klein	Mr. and Mrs. Robert Sablowsky
The Bruning Foundation	The Leibowitz and Greenway Charitable Family Foundation	Mr. Jeffrey Stedman
Clarence P. and Ann M. Cazalot	John P. Leonard, MD	The John and Louise Steegstra Memorial Fund
Eric* and Stacey Cohen	Dr. and Mrs. Michael S. Levine	The Joyce C. Stern Foundation
Morton Coleman, MD	Mr. and Mrs. Robert W. McAuley	W. Clement and Jessie V. Stone Foundation
Condon Family Foundation	Ms. Kimberly Metcalf	Ramesh and Madhvi Subrahmanian
Gladys and Errol Cook	Mr. and Mrs. Eugene F. Murphy	Mr. and Mrs. Richard D. Tomasello
Dell Technologies	John A. Nelson	Mr. and Mrs. Rick van Gestel
Jean and Steven Eichberg	The William and Anita Newman Foundation	Florence* and Robert Werner
Mr. and Mrs. Marvin Feig	OCLCO, Inc.	Michael and Laura Werner
Kevin and Debra Fennessey	Oliver and Cunningham Family Foundation	Ms. Janet L. Winter
FiberRise Communications, LLC	Leigh and Cory Olson	Andrea and Bruce Yablon
Norman J. and Doris Fisher Foundation	The Paul Foundation	Andrew D. Zelenetz, MD, PhD
	The Peykoff Family and Niagara Cares	

THE DENISE AND LARRY MASON SOCIETY

The Denise and Larry Mason Society honors those who have chosen to support the Lymphoma Research Foundation with a bequest, creating a legacy of hope for the lymphoma community. The following list includes bequests that supported life-saving research and support for the lymphoma community in 2020, as well as those who have committed to future gifts.

Anonymous	Joan R. Fishman*	Mr. Lawrence Prager and Mrs. Linda Myszak
Dr. Susan E. Baer and Mr. Bruce Thornburg	Joseph* and Mary Lou Hughes	The Estate of Nada Richardson
The Estate of John C. Balan	Mr. Thomas S. Lakritz	Ronald* and Toni Robbins
Ms. Amy Louise Barnett	Estate of Pamela G. Lebowitz	Mr. Harris M. Sholman
Maxa S. Berid, Esq.	Estate of Henry Chaim Lerner	Dennis* and Anna M. White
John Cohee, MD	Debra and Michael Linick	
Estate of Vicki L. Cruse	The Estates of Denise and Lawrence Mason	
Ms. Carol Davey	The Jerome and Elaine Nerenberg Foundation	

* In memoriam

TICKETED EVENTS SPONSORS

LRF is grateful to the following donors that contributed to the success of the Foundation's ticketed events throughout the 2020 fiscal year.

5 Points Capital Management
AbbVie Inc.
Anonymous
AstraZeneca
Janice Barefoot & Nick Zoochi
Lana & Michael Beaury
Chancellor Gary & Hildee Brahm
Jordan & Greg Brown
Robert & Kitty Brunswick
Michele & Glenn Burke
Thomas J. Burke
BYLT Basics
Cain Group
Peggy & Kevin Calcagnie
Joan & Vincent Carosella
Mary & Michael Carpenter
Celgene
Chao Family Comprehensive
Cancer Center, University of CA
Esther & Didier Choukroun
City National Bank
Lauren Clancy
The Cohen Family
The Condon Family Foundation
Gladys & Errol Cook
Laurie & Steven Davis
Gail & Larry Dobosh
Terry & Melvyn Drucker
Bennett M. Epstein
Mr. and Mrs. Robert Feilbogen
Debbie & Kevin Fennessey; Southern Glazer's
Wine & Spirits
James K. Finkel
Arlene Fischer
Jill & Mark Fishman
Florida Funders
Foundation Medicine, Inc.
Barbara & Jerry Freundlich
Lynn & Michael Froy
Gamida Cell

Genentech
Lori & Gary Gertzog
Jerry A. Goldman
Nancy Goldman
Tom & Jenn Goldstone/
The Goldstone Fund
Goodman-Lipman Family Foundation
Green Family Foundation
Kyle Haines & Michelle Boger
Midge & Mark Halpern
Philip Hilal
Diane & Gary Hirsch
Dr. Andrew & Debbie Hirschl
Hoag Family Cancer Institute
Sheri Hughes
JLL Capital Markets
The Johnson Foundation
Karyopharm Therapeutics
Barrie & Glen Kassan
Leila K. Kight
Kite, A Gilead Company
Terri & Jeff Krasnoff
KS Capital Inc.
KushCo Holdings
Alison & David Levin
Paul V. Majkowski, Esq.
Michelle & AJ Manas;
Uncorked Escapes
Susan & Arturo Manas
Nora & Mel Masuda
Mr. Edward E. Matthews
Meredith McMackin
Reed & Nicole McMackin
Memorial Sloan Kettering
Cancer Center
Mr. and Mrs. David A. Messer
Kimberly Metcalf
Miranda & Associates
John A. Nelson
NewYork Presbyterian Hospital

Novartis Pharmaceuticals Corp.
John D. Olson
Leigh & Cory Olson
Mitchell Orfuss
Pan-Pacific Mechanical
Pfizer Oncology
David & Miriam Phalen and The Grinberg
Family Foundation
Pharmacyclics LLC and Janssen Biotech, Inc.
Catherine and Leon Pollack
Prince Family Foundation
Anna Rentz
The Robbins Family Foundation,
Beverly & Ed Robbins
Michelle & Olivier Robert
Drs. Gladys & Pedro Rodriguez
Stephanie & Steven Rosen
Julia Schneider
Laurie & Benjamin Schneider
SebastianStrong Foundation
Bonnie & Fred Shapiro
The Starr Foundation
Starwood Property Trust
Stern Family Philanthropic Foundation
Strumwasser Family Charitable Fund
Susan & Jeffrey Sussman
TechStyle, Inc.
TG Therapeutics
The Fund for Blood & Cancer Research, Inc.
The Robbins Family Foundation
Joyce Thompson & Jim Priestly
Linda and Ken Vaughan
Weber Christensen &
Heinrichs, LLP
Darlene & Nate Weiner
Dr. Steven & Ana Weissman
Michael & Laura Werner
Robert Werner
Andrea & Bruce Yablon
Mamoun Younes

PEER-TO-PEER SUPPORTERS

LRF is grateful to the following fundraising teams that contributed to the success of the Foundation's peer-to-peer fundraising events throughout the 2020 calendar year.

2020 ARIZONA LYMPHOMA WALK

Beat It:
Captain, Nancy Allis

BrewCrew for Connie:
Captain, Natalie Brewster

Memory of Max Allen:
Captain, Linda Allen

Team Daisy Strong:
Captain, Daisy Hernandez

Team Ed:
Captain, Ellen Finney

Team Markley:
Captain, Ronald Markley

Team Mayo Clinic Lymphomies:
Captain, Eileen Reali

Team NXP:
Captain, Bob Kenney

2020 CHICAGO LYMPHOMA WALK

#Support Team:
Captain, Debra Gelman

Bannon Bunch:
Captain, Annette Bannon

Brisk Warrior Walkers:
Captain, Marla Briskman

CureFunders Team

Ed Brennan:
Captain, Kathleen Walsh

Hike for Mike 5.0:
Captain, Aimee Lanphere

Jack's Pack:
Captain, Hillary Linden

Jammin' for Lymphoma:
Captains, Ryan & Rhiannon

Karen's Crusaders:
Captain, Jessica Quinn

Laura's Loony Lymphomettes:
Captain, Laura Tepper

Los Morelianos:
Captain, Luz Maria Ramirez-Morgen

Nancy and Tony's Cancer Fighting Ninjas:
Captains, Nancy Tran & Tony Chin

Peggy's Pacesetters:
Captain, Peggy Levine

PwC LRF Team:
Captain, John Pearl

Remembering Dan's Journey:
Captain, Ashley White

Rob's Warriors:
Captain, Pam Salvesen

Ryan & Sandy's Angels:
Captain, Holly Grybas

STICKWALKERS:
Captain, K. Bruce Stickler

Team Janice-Never Forget:
Captain, Kimberly Romic

Team Mendy:
Captain, Cheryl Mendelson

Team OBIE:
Captain, David Oberst

Team Papa:
Captain, Eden Jacoby

Team Sarnoff:
Captain, Mona Sarnoff

Team SeaGen:
Captain, Christina Piper

2020 DALLAS LYMPHOMA WALK

Lymphomaniacs 2020:
Captain, Larry Postel

Team Briggs:
Captain, Ronetta Briggs

Team Crane:
Captain, Marilyn Crane

Team Riordan:
Captain, Sydney Riordan

Team Jon Ross:
Captain, Jon Ross

Team Tommy:
Captain, Leigh Olson

Wendy's Eagles:
Captain, Wendy Harpham

2020 HOUSTON LYMPHOMA WALK

Hodgkins Smodgkins:
Captain, Dexter Neal

MARISOL'S STARS:
Captain, Marisol Del Sol

MD Anderson Cancer Center:
Captain, Diana Nava

Tony Orta Crusaders:
Captain, Dolores Orta

You're the Cure!:
Captain, Donna Reinbolt

2020 MINNESOTA LYMPHOMA WALK

22 & Counting:
Captain, Robert Langer

Carol's Team:
Captain, Carol Dyer

Carry On:
Captain, Skip Wight

Fight for Kaddy:
Captain, Marissa Dybedahl

Hoof it for Ellie:
Captain, Renee Miller

Hoover's Heroes:
Captain, Dana Bork

IMAGINE:
Captain, Cathy Bergin

Mayo Clinic Team:
Captain, Laurie Dripps

Mr. K:
Captain, Debbie Kunkel

Nancy's Lymphoma Fighters:
Captain, Nancy Ingvaldson

Peggy's Patrol:
Captain, Peggy Sorenson Parks

Pirates of the Cure-ibbean:
Captain, Jean Parupsky

Team Deanna:
Captain, Dean Thorson

Team Debbie:
Captain, Debbie Roscoe

Team Kelly:
Captain, Christopher Kelly

Team Singer:
Captain, Steven Singer

The Knockouts:
Captain, Jenn Hielsberg

Tony's Tigers:
Captain, Anthony Glavan

FUNDRAISE YOUR WAY 2020

2020 TD Five Boro Bike Tour:
Led by Team LRF

Irish Whisper of Hope Walk:
Led by The Kane Family

Laps for Lymphoma: Led by
The Grassfield High School

Let's Beat Lymphoma:
Captain, Gigi Hatcher

Max Stone Strong:
Captain, Joshua Montague

Northeast Rod Run:
Captain, TJ Raggucci

We Ride:
Captain, Kevin Lanphere

2020 RALLY ON! AMERICA

SeaGen:
Captain, Taira Griffith

SeaGen MidSouth Division:
Captain, Tim Willis

The Blood Counts:
Captain, Robert Linderman

2020 NEBRASKA LYMPHOMA WALK

#CorbettGremmStrong:
Captain, Tim Corbett

Bear Bartlett:
Captain, Julia Bartlett

Buffett Cancer Center Lymphomaniacs:
Captain, Dr. Julie Vose

gotCUREage:
Captain, Beth Klauschie-Perez

Hodge Podge:
Captain, Melissa Ingrisano

N of 1:
Captain, Janis Starman

NoOneWalksAlone/#alexisstrong:
Captain, Markaya Loftus

Papa's All Stars:
Captain, Joyce Clark

Team Kathy:
Captain, Katherine Folk

Team Pawsome:
Captain, Krystin Mavity

2020 LYMPHOMA RESEARCH RIDE

AstraZeneca Oncology Team:
Captain, Kert Putsepp

BeiGene Bikers:
Captain, Nancy Cass Backenstoe

BMS Hematology:
Captain, Sundiata Millett

Bruce Johnson's "Good News":
Captain, Bruce Johnson

Center for Cancer and Blood Disorders:
Captain, Ralph Boccia

Cheek2Cheek:
Captain, Dianne Cheek

Cheson Riders:
Captain, Dr. Bruce Cheson

Children's National:
Captain, Hema Dave

Clark Construction:
Captain, Cory Surber

Epizyme:
Captain, Kelly Garr

Flaming Marmots:
Captain, Geoffrey Grubbs

Foundation Medicine Beasts of the East:
Captain, Jared Rosa

Frederick Health Oncology:
Captain, Mark Bassett

George Washington Cancer Care:
Captain, Dr. Kieron Dunleavy

Karyopharm:
Captain, Kristina Schultz

Kite Speed:
Captain, Edna Choi

Las Tortugas:
Captain, Hildita Munoz

Lympho-Chase:
Captain, Fred Smith

Lymphomaniacs:
Captain, Sondra Shemer

M.O.H.:
Captain, Dr. Linda Burrell

Reel Riders:
Captain, Angela Reel

Remission: Possible:
Captain, Burt Braverman

Remission Riders:
Captain, Valerie Kappler

Rigel:
Captain, Troy Bishop

Shaken Not Stirred:
Captain, Karla Grossenbacher

Sibley Memorial Medical Oncology:
Captain, Aisha House

Team Dan:
Captain, Daniel Daddario

Team Hooper:
Captain, Patrick Hooper

Team SeaGen:
Captain, Christina Piper

Team Taverna:
Captain, Lisa Taverna

Team Turtle:
Captain, William Cox

Virginia Cancer Specialists:
Captain, Kristin Michiel

Word Up:
Captain, Bradley Cohn

2020 NEW YORK LYMPHOMA WALK

ComMa Chameleons:
Captain, LRF Communications Team

FUN-Raisers:
Captain, LRF Development Team

Lymphatically Hopeful:
Captain, Joseph Howell

Notorious C.U.R.E.:
Captain, LRF Programs Team

NYC Lauren:
Captain, Lauren Koffler

POPPY ALLAN:
Captain, Howard Rotto

Team Kweit:
Captain, Lewis Kweit

Team Scott:
Captain, Helen Clemens

Team Vaughan:
Captain, Linda Vaughan

The Frank Footers:
Captain, Adam Frank

The IT Bandits:
Captain, Megan Denecour

Weill Cornell Lymphoma Program:
Captain, Amelyn Rodriguez

2020 THE GREAT BAKE

Dana Bork

Loren Brill

Seren Bruce

Rachel Elmore

Phyllis Khao

Angie Koch

Ray Limon

Micah Ramey

Kelsey Ryder

Odessa Stiles

William White